



The Ultimate Edge
for Professionals

The Ultimate Edge
for Professionals



Contents

- 04 About KAI
- 05 The KASHO symbol
- 06 The KASHO scissors
- 07 Scissor design

- 08 Millennium Series
 - 10 XP Series
- 11 Disc Operation System
 - 12 Green Series
 - 14 Ivory Series
 - 16 Blue Series
- 18 Design Master Series
 - 20 Technology
 - 21 Ergonomic Design

- 22 Knives and Razors
 - 24 Accessories

- 26 Care Instructions



**:: CREATING THE FUTURE
WITH CUTTING EDGE TECHNOLOGY ::**



Headquarters Tokyo, Japan

In a history dating back over 90 years, the KAI group, based in Tokyo, is renowned for its superbly functional, incisive and durable cutting tools and related products.

These traits have positioned KAI's products among the world's best. The common denominator - quality and perfection - is based on the centuries-old tradition and culture of the Japanese Samurai sword smithy.

KAI's product line consists of over 10,000 different items, positioning the KAI group among the leading cutlery manufacturers worldwide.

By expanding its overseas network in various countries in various forms, KAI is promoting globalization in order to contribute to the world as an international company.

KAI has been operating on the European market through its subsidiary in Germany, Kai Europe GmbH, since 1980 and has successfully established itself with various products exhibiting quality, functionality and technology.



:: KASHO -
THE SYMBOL OF CRAFTSMANSHIP ::

The KASHO hand-crafted Professional Hair Stylist Scissors are the crowning achievement of the “shisho”, a highly skilled craftsman who proudly engraves his scissors with the KASHO mark.

Each pair of the KASHO scissors reflects impeccable form, finish and function. Today, every pair of the KASHO scissors is created through careful design and engineering with advanced materials and heat-treatment technology – and the blending of an integrated manufacturing process with skilful workmanship which measures up to the unrelenting standards passed through generations of the Japanese Samurai sword smithies.

KASHO, [Japanese] master of (smithy-) fire | KA~fire, SHO~master



Forging craftsmanship, Japan

Jaran

:: THE KASHO SCISSORS ::

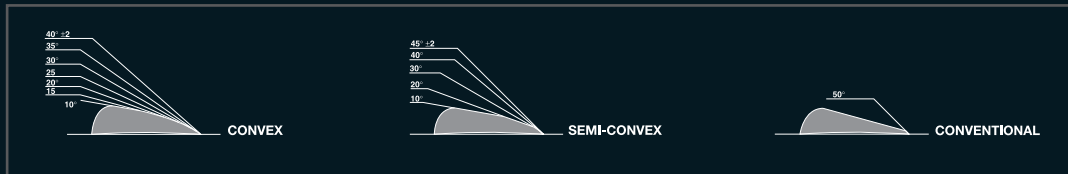
Kasho scissors feature two different stainless steel alloys in order to meet the high Japanese quality demands for sharpness and material. The combination of different hardness grades means that every pair of scissors is perfectly balanced and guarantees that the cutting edge is exceptionally durable. The unique “Ultimate Edge” KASHO scissor blades guarantee that they

KASHO



are a pleasure to work with and cut accurately. The unique manufacturing process ensures the necessary precision of the concave inner surfaces (hollow ground) and convex outer surfaces of the scissor blades. The convex-edged scissor blades are characterised by their exceptionally durable cutting edge. These blades are honed to an extremely sharp state with the inner side hollowed to such a point that the blades only touch at the point of intersection. This refined technology ensures superb cutting edge durability, while at the same time reducing cutting edge resistance to a minimum -and thus considerably limiting hand fatigue.

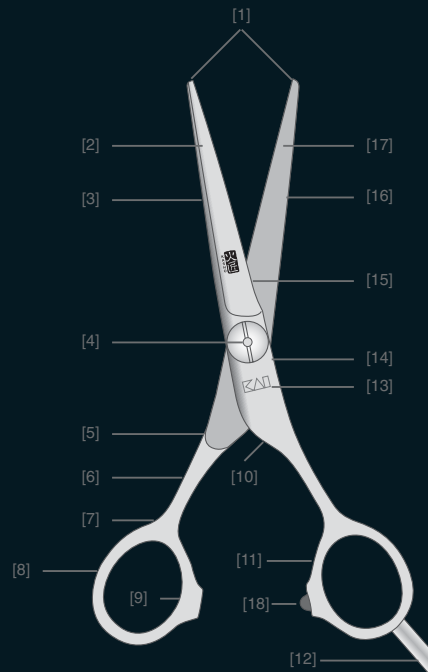
Every pair of KASHO scissors is supplied with optimal tension settings; these do, however, occasionally need to be checked and readjusted as required, to ensure the durability of the cutting edge and to guarantee healthy ease of use. Most KASHO scissors are therefore fitted with a tension adjustable screw to ease re-adjustment. The patented Disc Operation System ensures that the KASHO Millennium and XP Series are always perfectly tensioned.



Comparison of KASHO Convex Blade and KASHO Semi-Convex Blade with conventional blade.

:: SPECIALISED SCISSOR TERMS ::

- | | |
|---------------------|------------------------|
| 1 Points | 10 Joint |
| 2 Outside Blade | 11 Ring Flat |
| 3 Back Side | 12 Finger Rest |
| 4 Screw Hole | 13 Branding |
| 5 Ride or Half moon | 14 Fore Side |
| 6 Shank | 15 Teardrop (Convex) |
| 7 Neck | 16 Hollow (Concave) |
| 8 Outside Ring | 17 Edge |
| 9 Inside Ring | 18 Silencer or Stopper |





DAMASCUS SERIES . KAD
5 MODELS OFFSET
NONPLUSULTRA

★★★★★

A japanese masterpiece

Combining old forge traditions with state of the art and futuristic technology. The maximum sharpness, hardness and durability of the edges is achieved using the renowned wear resistance V10 stainless steel alloy. The Damascus steel is then carefully layered on top to produce the beautiful Damascus patterning.

A unique 'flat screw' system with integrated ball bearing ensures a silky smooth operation. The Convex and hollow ground blades are finely mirror polished. The Kasho Damascus series represent the ultimate in hand finished sophistication.

KAD 60 OS DLC | 55 OS DLC | 65 OS | 60 OS | 55 OS



KAD 60 OS DLC
Form : OFFSET
Length : 6.0"

LIMITED EDITION



KAD 55 OS DLC
Form : OFFSET
Length : 5.5"

LIMITED EDITION



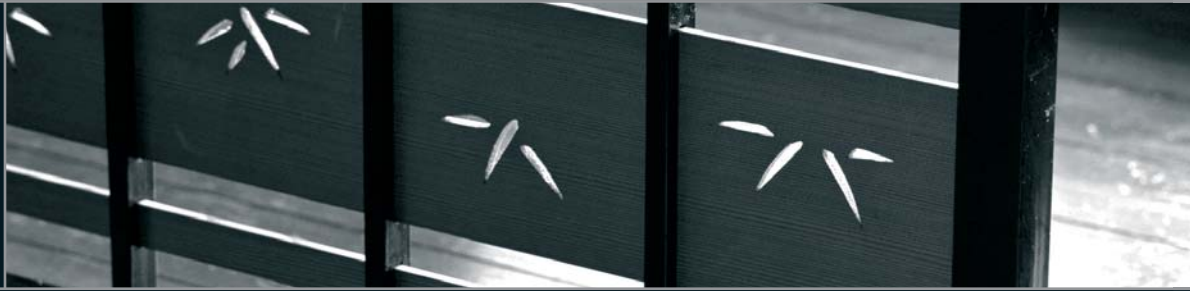
KAD 65 OS
Form : OFFSET
Length : 6.5"



KAD 60 OS
Form : OFFSET
Length : 6.0"



KAD 55 OS
Form : OFFSET
Length : 5.5"



:: Millennium Series ::

The KASHO Millennium Series represents superb craftsmanship and uncompromising quality. These exceptionally sharp, ergonomically designed hair styling scissors are made of sinter metal that is extremely resistant. The patented Disc Operation System ensures perfect, even movement and optimum tension.



KML-55 OS

>> Form: Offset (ergonomically designed)
Screw: Disc Operation System
Length: 5.5"

KML-60 OS

>> Form: Offset (ergonomically designed)
Screw: Disc Operation System
Length: 6.0"



KML-65 OS

>> Form: Offset (ergonomically designed)
Screw: Disc Operation System
Length: 6.5"



紅



The smooth operation of these high mirror polished scissor blades reduce cutting resistance to a minimum, which in turn reduces hand fatigue. The Millennium Series features a special ergonomic finger rest and is available as offset and straight designs.

**KML-53 S**

>> Form: Straight
Screw: Disc Operation System
Length: 5.3"

KML-58 S

>> Form: Straight
Screw: Disc Operation System
Length: 5.8"

**KML-62 S**

>> Form: Straight
Screw: Disc Operation System
Length: 6.2"



CERAMIC SERIES : KZR
1 MODEL OFFSET
HYBRIDE

Hard as stone, soft as silk

The new Kasho Ceramic embodies modern manufacturing processes and masterful accuracy. The incredible sharpness and durability, together with trouble-free operation undoubtedly sets new standards in professional quality and cutting experience. The flat screw system with integrated ball bearing guarantees a silky smooth operation. The highly ergonomic shape, complete with finger rest provides comfortable handling for creative freedom.

The Convex and hollow ground blades are made of a wear resistant, durable stainless steel alloy (ATS314), which is carefully honed and finely mirror polished. The fine zirconium ceramic insert is produced by Kyocera, the world renowned manufacturer of ceramic material. Ceramic is not resistant to ultraviolet rays used for sterilization.

KZR 60 OS



KZR 60 OS
Form : OFFSET
Length : 6.0"



:: XP Series ::

The new KASHO XP Series combines the excellent features of the acclaimed Green Series with the unique Disc Operation System of the Millennium Series. Forged from the low-wear VG-10 stainless steel alloy, the XP-Series is characterised by its high durability and hardness. In the trend of ergonomically designed scissors, the XP Series offers an ergonomically advanced straight design – “Semi-Semi Offset”.



KXP-53 SS

>> Form: Semi-Semi Offset
Screw: Disc Operation System
Length: 5.2”

KXP-58 SS

>> Form: Semi-Semi Offset
Screw: Disc Operation System
Length: 5.8”



KXP-63 SS

>> Form: Semi-Semi Offset
Screw: Disc Operation System
Length: 6.3”



赤



:: The Disc Operation System ::

The outstanding features of the KASHO Millennium and the KASHO XP-Series are their exceptional quality and their unique Disc Operation System.

This sophisticated screw system consists of an enclosed ball bearing unit, a special spring and a synthetic disc that ensures uniform pressure and incredibly smooth operation.

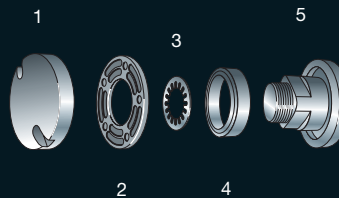
The enclosed ball bearing is free from collecting hair, dust and other substances from outside so that nothing may affect the precise movement of the scissors, whilst the synthetic disc between the upper and lower blades minimises friction and wear of the blades.

Thanks to this complex Disc Operation System with a replaceable synthetic disc the Millennium and the XP-Series have a considerably longer life span than any conventional models.

The Disc Operation System:

MILLENNIUM

XP



- 1 Nut
- 2 Synthetic disc
- 3 Special spring
- 4 Enclosed ball bearing
- 5 Screw



:: Green Series ::

The semi-offset designed Green Series is equipped with a tension adjustable screw and an integrated ball bearing. The Green Series includes the texturizers, where the teeth are so shaped by up-to-date erosion technique that each tooth meets the cutting edge at the same angle.



KGR-50 OS

- >> Form: Semi-Offset (ergonomically designed)
- Screw: Tension adjustable screw + ball bearing
- Length: 5.0"

KGR-55 OS

- >> Form: Semi-Offset (ergonomically designed)
- Screw: Tension adjustable screw + ball bearing
- Length: 5.5"



KGR-60 OS

- >> Form: Semi-Offset (ergonomically designed)
- Screw: Tension adjustable screw + ball bearing
- Length: 6.0"



緑



The gaps between the teeth are tapered towards the inside of the teeth blade, which prevents a tangle of hair when pulling out. The convex blades are mirror polished.



KGR-55/T 15

- >> Texturizer with 15 teeth
- Screw: Tension adjustable screw + ball bearing
- Length: 5.5"

KGR-55/T 30

- >> Texturizer with 30 teeth
- Screw: Tension adjustable screw + ball bearing
- Length: 5.5"



KGR-55/T 30B

- >> Texturizer with 30 teeth, B-Type
- Screw: Tension adjustable screw + ball bearing
- Length: 5.5"





GREEN SASABA SERIES . KGRS
2 MODELS OFFSET TEXTURIZER
EXCELLENCE

★★★★★

Fits like a glove, feels like your hand

The semi-offset designed Green SasaBa (bamboo leaf form) is equipped with a tension adjustable screw and an integrated ball bearing. The forming of the SasaBa Series is powerful.

The Green Series includes a SLICER and 4 texturizers models. Texturizer's teeth are so shaped by up-to-date erosion technique that allows each tooth to meet the cutting edge at the same angle. Two of the Texturizer models have a double serrated edge (WT models). The gaps between the teeth are tapered towards the inside of the teeth blade, which prevents a tangle of hair when pulling out. The convex blades are mirror polished.

KGRS 60 OS T38B | 60 OS WT38B
SCREW SYSTEM: TENSION ADJUSTABLE SCREW + BALL BEARING



KGRS 60 OS T38B
Form : OFFSET
Length : 6.0"
Teeth : 38
B-TYPE



KGRS 60 OS WT38B
Form : OFFSET
Length : 6.0"
Teeth : 38
B-TYPE & DOUBLE SERRATED



:: Ivory Series ::

The KASHO Ivory Series represents the upper middle category of the KASHO hair styling scissors. The tension adjustable screw allows fine tuning of the scissor tension. The Ivory Series is available in the classic, straight models as well as in the ergonomically designed, offset models: both versions are also available for left-handed users. The convex blades are mirror polished.



KIV-45 S

>> Form: Straight
Screw: Tension adjustable screw
Length: 4.5"



KIV-50 S

>> Form: Straight
Screw: Tension adjustable screw
Length: 5.0"



KIV-55 S

>> Form: Straight
Screw: Tension adjustable screw
Length: 5.5"



KIV-60 S

>> Form: Straight
Screw: Tension adjustable
screw
Length: 6.0"

象牙



KIV-45 OS

>> Form: Offset
(ergonomically designed)
Screw: Tension adjustable screw
Length: 4.5"

KIV-50 OS

>> Form: Offset (ergonomically designed)
Screw: Tension adjustable screw
Length: 5.0"



KIV-55 OS

>> Form: Offset (ergonomically designed)
Screw: Tension adjustable screw
Length: 5.5"



KIV-52 SL

>> Form: Lefty, Straight
Screw: Tension adjustable screw
Length: 5.2"



KIV-52 OSL

>> Form: Lefty, Offset
Screw: Tension adjustable screw
Length: 5.2"



SILVER SERIES . KSI
7 MODELS OFFSET/STRAIGHT
AVANTGARDE

★★★★

This is what perfection looks like

The KASHO Silver Series represents the new middle category of the KASHO hair styling scissors. The tension adjustable flat screw allows fine tuning of the scissor tension and will meet all the requirements of hair stylists who need the 'right' tools for comfortable and creative work.

The Silver Series is available in a new exceptionally elegant and extremely comfortable design, all models are very ergonomically designed offset models. The convex KASHO blades are mirror polished.

KSI 70 OS | 65 OS | 60 OS | 55 OS | 60 S | 55 S | 50 S
SCREW SYSTEM: ADJUSTABLE FLAT HEAD SCREW



KSI 70 OS
Form : OFFSET
Length : 7.0"



KSI 65 OS
Form : OFFSET
Length : 6.5"



KSI 60 OS
Form : OFFSET
Length : 6.0"



KSI 55 OS
Form : OFFSET
Length : 5.5"



KSI 60 S
Form : STRAIGHT
Length : 6.0"



KSI 55 S
Form : STRAIGHT
Length : 5.5"



:: Blue Series ::

The KASHO Blue Series epitomises all the advantages of Japanese scissors, but is fitted with the flat head screw system. A slight split of the screw holds the screw thread firmly against the lower blade, allowing the tension of the screw to be finely adjusted. The Blue Series are available as a straight or ergonomically designed offset model. The convex blades are mirror polished.



KCB-45 OS

>> Form: Offset (ergonomically designed)
Screw: Flat head screw
Length: 4.5"

KCB-50 OS

>> Form: Offset (ergonomically designed)
Screw: Flat head screw
Length: 5.0"



KCB-55 OS

>> Form: Offset (ergonomically designed)
Screw: Flat head screw
Length: 5.5"

青



KCB-45 S

>> Form: Straight
Screw: Flat head screw
Length: 4.5"

KCB-50 S

>> Form: Form: Straight
Screw: Flat head screw
Length: 5.0"



KCB-55 S

>> Form: Straight
Screw: Flat head screw
Length: 5.5"

KCB-60 S

>> Form: Straight
Screw: Flat head screw
Length: 6.0"





:: Design Master Series ::

The KASHO Design Master Series is regarded as the introductory model of a KASHO. The ratchet screw system allows variable tension setting. The Design Master Series is available as a straight or ergonomically designed offset model. The semi-convex blades are satin finished.



KDM-50 OS

>> Form: Offset (ergonomically designed)
Screw: Ratchet screw
Length: 4.5"

KDM-55 OS

>> Form: Offset (ergonomically designed)
Screw: Ratchet screw
Length: 5.5"



KDM-60 OS

>> Form: Offset (ergonomically designed)
Screw: Ratchet screw
Length: 6.0"

銀

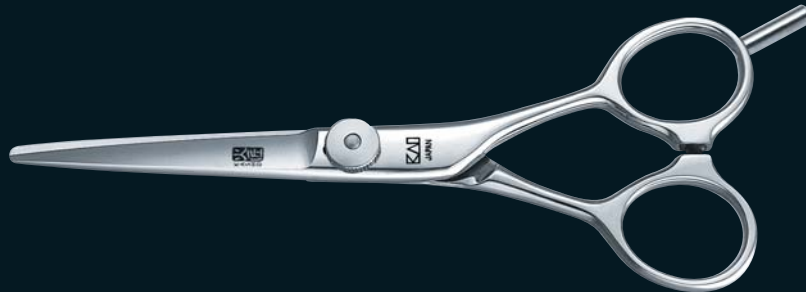


KDM-45 S

>> Form: Straight
Screw: Ratchet screw
Length: 4.5"

KDM-50 S

>> Form: Straight
Screw: Ratchet screw
Length: 5.0"



KDM-55 S

>> Form: Straight
Screw: Ratchet screw
Length: 5.5"

KDM-60 S

>> Form: Straight
Screw: Ratchet screw
Length: 6.0"





IMPRESSION SERIES . KBP
2 MODELS OFFSET
PURE

Designed by KASHO

The Impression Series by KASHO raises the standard of introductory models to a new grade.

KBP 60 OS | 55 OS
SCREW SYSTEM: RATCHET SCREW



KBP 60 OS
Form : OFFSET
Length : 6.0"



KBP 55 OS
Form : OFFSET
Length : 5.5"

Technique

:: KASHO - TECHNOLOGY ::

The KASHO Hair Styling Scissors are manufactured of special high-carbon stainless steel alloy which has superior resistance to corrosion and wear. The steel is variously compounded with Molybdenum, vanadium, cobalt and other elements to achieve state-of-the-art characteristics. KASHO's advanced heat treatment and sub-zero quench techniques assure long-term blade sharpness and durability.

KASHO



Forging and coining

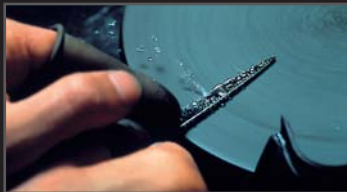


Vacuum Heat Treatment



Grinding

The KASHO's unique Ultimate Edge is made possible by its proprietary state-of-the-art manufacturing process, which enables absolute accuracy in shaping the proper curvature of both the inner concave blade surface and the exterior convex surface. Match-paired blades are meticulously hand-honed, polished to flawless lustre, and assembled by expert artisan-technicians. Total quality management is assurance of the KASHO's continuing commitment to excellence. KASHO's technical facilities include extensive computer-aided-design and test laboratories, where engineers and designers continuously advance new ideas to improve the materials, dynamics, aesthetics and manufacturing process of the KASHO Hair Stylist Scissors.



Honing



Assembly



Quality inspection

:: ERGONOMIC DESIGN ::

The KASHO Hair Styling Scissors are made in three handle configurations – offset, semi-offset and straight. With the offset handle, you can work with your shoulders straight and elbow down, using minimal wrist movements. The semi-offset is a comfortable compromise between the offset and straight models.

When working with the semi-offset or offset models, the shoulders remain straight and the elbows are not raised, putting far less strain on the wrist.



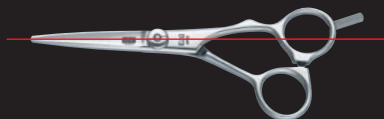
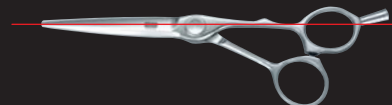
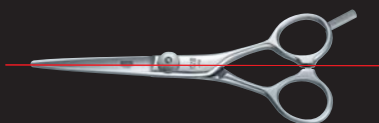
[1] straight handle

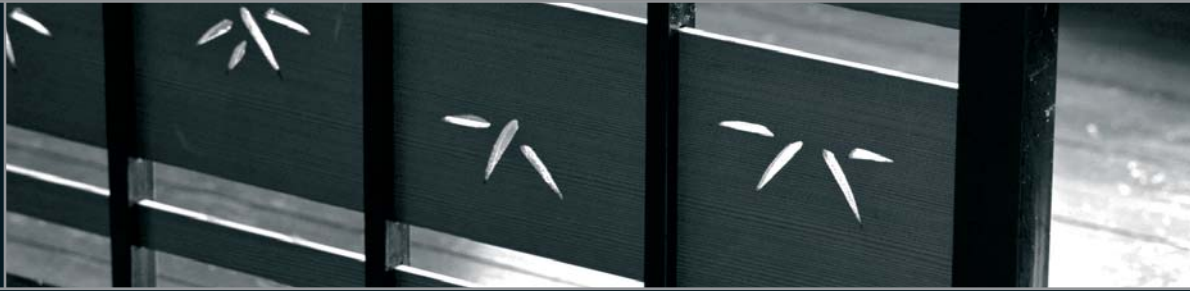


[2] semi-offset handle



[3] offset handle





:: Designing Razor ::

The ergonomically contoured KASHO Designing Razor is an ideal tool for creative work. The exceptional sharpness of the blade, which was originally designed for use in surgery, enables accurate shaping and thinning of hair. The synthetic comb containing antibacterial and anti-static elements symmetrically forms on the both sides of the blade without gaps. Therefore it is very hygienic and free from static charge and clogging of hair. The Designing Razor is available as a straight or folding type.



KCS-SH

>> KASHO Designing Razor
Form: Straight

KCS-NH

>> KASHO Designing Razor
Form: folds away



KCS-10BL

>> KASHO Designing Razor Blades
Contents: 10

黄



:: KAI Captain Razor ::

The KAI Captain Razor is a professional precision instrument suitable for both shaving and hair dressing. The blade was originally designed for surgical application and features extraordinary sharpness and cutting edge durability. Thanks to the special dispenser system the blades can be safely and quickly inserted in the razor holder. The KAI Captain Razor is available in straight and fold-away designs.



CAP-J7

>> KAI Captain Razor,
Straight

CAP-20BL

>> KAI Captain Razor Blades
Contents: 20



CAP-R7

>> KAI Captain Razor,
Form: folds away





:: KASHO Accessories ::



K-1 Cordura case

- >> Holds 2 pairs of scissors, 1 razor and blades
- Material: Cordura fabric
- Measurements: 9.5 x 19.5 x 2.5 cm (H/W/D)



K-6 Scissor shoulder bag

- >> Bag with six compartments
- incl. adjustable strap
- Material: Genuine leather, black
- Measurements: 20.5 x 16.0 x 5.5 cm (H/W/D)





K-4 Scissor holder small
>> Scissor holder with 3 compartments
incl. adjustable strap
Material: Genuine leather, black
Measurements: 18.5 x 10.5 x 1.5 cm (H/W/D)



K-7 Scissor holder large
>> Scissor holder with 4 compartments
incl. adjustable strap
Material: Genuine leather, black
Measurements: 17.0 x 14.0 x 4.5 cm (H/W/D)

K-8 Scissor sheath

>> designed to protect the scissors
Material: PU-leather, black
Measurements: 12.5 x 4.0 x 1.5 cm (H/W/D)



Care

KASHO



:: KASHO – CARE INSTRUCTIONS ::

- The scissor blades should be wiped with a clean, soft cloth or leather after every use.
- The pivot should be regularly oiled; we recommend high quality machine oil.
- To prevent possible damage to the scissors, we recommend that they are always stored in a safe and dry environment and are kept closed.
- The scissor tension should be regularly checked and adjusted if required.
- They should only be sharpened or re-conditioned by service agents recommended by KAI.
- KASHO scissors are precision tools, and should be treated and cared for as such.



The Ultimate Edge
for Professionals

VANTA SAS